

Explore Tohoku 3-night / 4-day Winter



Overall Tour Overview & Features

This 3-night, 4-day winter itinerary, starting and ending in Sendai, is designed to highlight the best of Tohoku's snow scenery, hot springs, and cozy winter experiences. The plan offers a magical journey through snowy landscapes, from the dramatic winter coastline of Matsushima Bay to the snow-covered mountains of Yamadera. The trip culminates in a relaxing soak at the famous Ginzan Onsen, combined with warm winter foods and the potential sparkle of city illuminations

Day 1 / Arrival in Sendai

Your winter journey begins upon arrival in Sendai. Start your sightseeing at the Zuihoden Mausoleum, the resting place of Date Masamune. From there, visit the Aoba Castle ruins to see winter views of the city below. Afterward, warm up with some shopping and explore the local treats available at Sendai Station's extensive food halls. For dinner, you will try Sendai's famous specialty, *gyutan* (grilled beef tongue). You will stay overnight in Sendai



➤ Spot Details & Charm

***Zuihoden Mausoleum:** The ornate resting place of Date Masamune.

***Aoba Castle Ruins:** Offers winter views of the city.

***Sendai Station:** A perfect place to warm up and find local foods

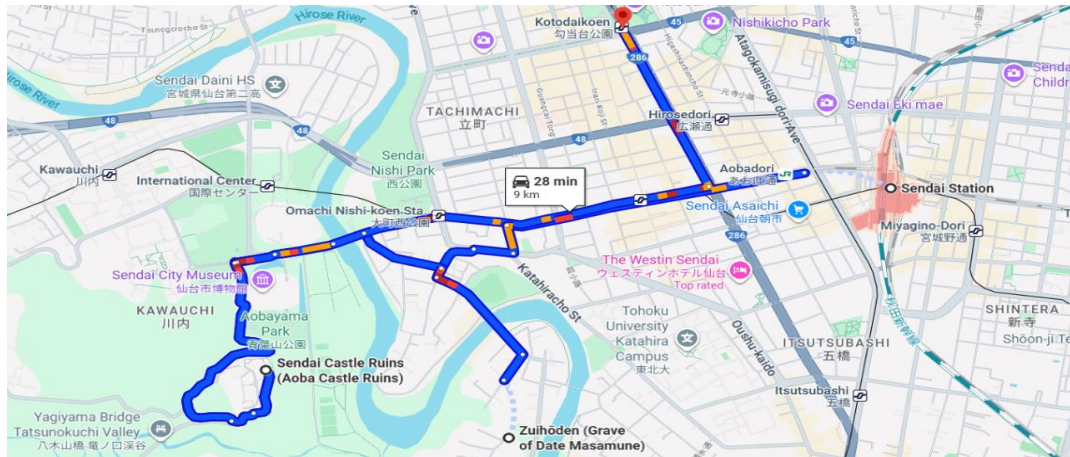
Overnight: Sendai.

➤ Dining Focus

*Indulge in Sendai's ultimate specialty for dinner: **Gyutan (Grilled Beef Tongue)**.

Savor the thick, tender slices of charcoal-grilled tongue, a truly unique and famous local delicacy.

➤ Places to Visit Map



Travel Time: The total driving time between Zuihōden Mausoleum and Aoba Castle Ruins is approximately 16 minutes (4.9 km).

Day 2/ Matsushima Bay & Shiogama (Miyagi)

Take a short 30-minute train ride to Matsushima Bay. You will embark on a boat cruise through the pine-covered islands, which are often misty and look dramatic in the winter. After the cruise, visit the historic Zuiganji Temple and the iconic Godaido Hall. In the afternoon, continue to the Shiogama Fish Market to try fresh winter seafood; oysters and tuna are at their best this season. Return to Sendai for the evening. If your visit is during December, you may see the city's sparkling winter illumination, the "Sendai Pageant of Starlight."



► Spot Details & Charm

***Matsushima Bay Cruise:** See the islands in a dramatic, misty winter setting.

***Zuiganji Temple & Godaido Hall:** Historic sites to explore.

***Shiogama Fish Market:** The best place for fresh winter seafood like oysters and tuna.

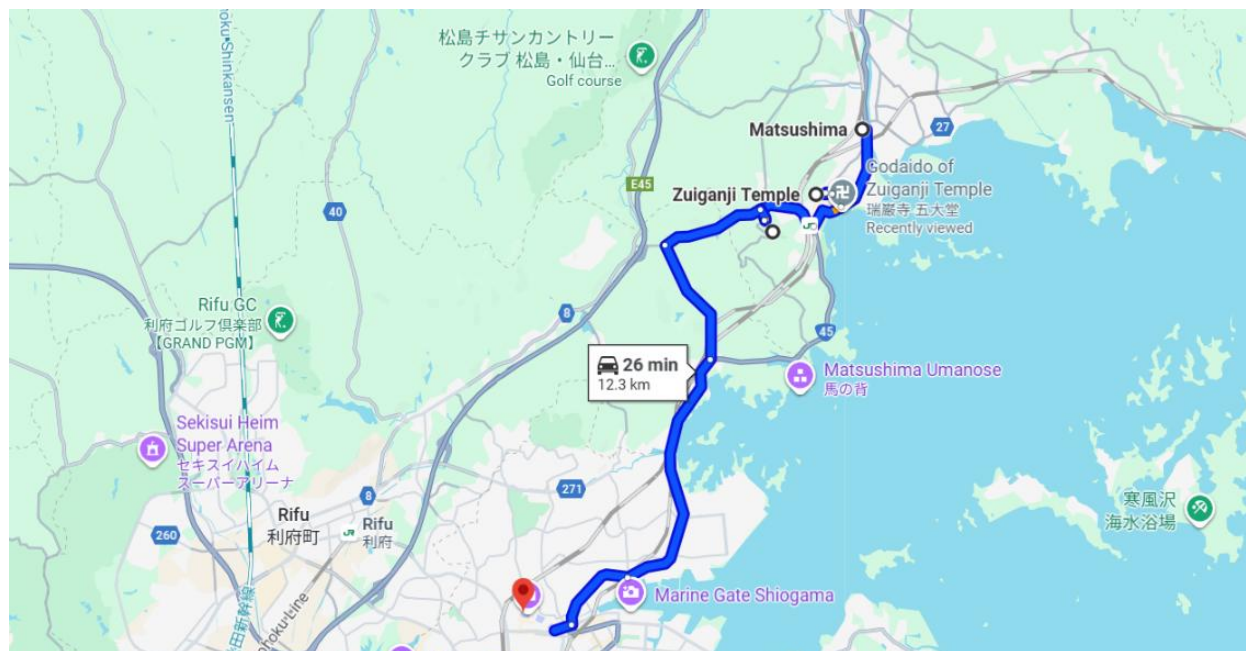
***Sendai Pageant of Starlight:** A beautiful city illumination (December only).

Overnight: Sendai.

► Dining Focus

*Fresh winter seafood, especially Oysters and Tuna, at Shiogama Fish Market.

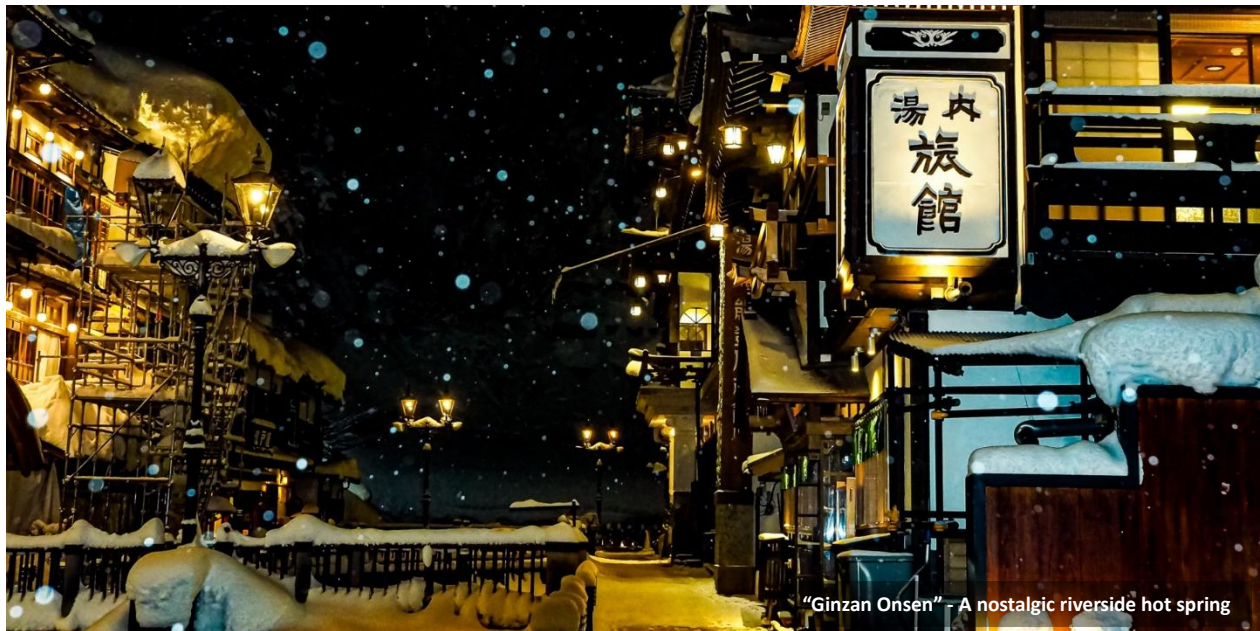
► Places to Visit Map



Travel Time: The drive between major points takes approximately 1 hour 4 minutes (42.7 km).

Day 3/ Yamadera & Ginzan Onsen (Yamagata)

Today, you will journey to the mountains of Yamagata Prefecture. In the morning, take a one-hour train to Yamadera Temple. You will climb the 1,000 steps up the mountainside; the path is quiet, magical, and lined with snow in winter. In the afternoon, continue your journey to Ginzan Onsen (approx. 1.5 hours). Stroll through the romantic, snowy hot spring town, famous for its Taisho-era buildings and picturesque bridges. You will stay overnight at a traditional ryokan, enjoying a relaxing onsen bath.



► Spot Details & Charm

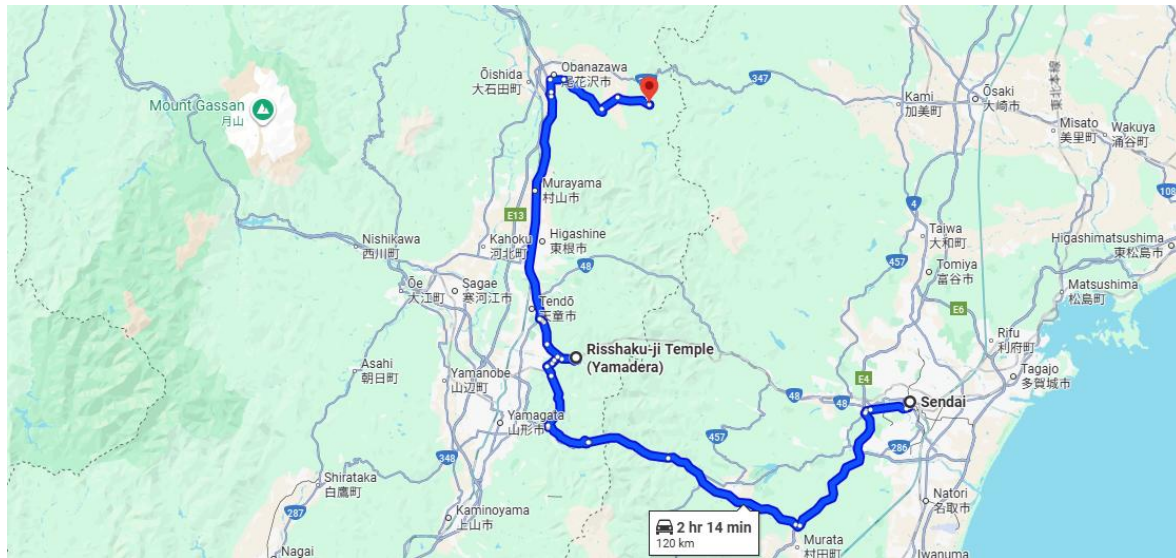
*Yamadera Temple: Climb 1,000 steps through a quiet, magical, snowy landscape.

*Ginzan Onsen: A romantic, snowy hot spring town with beautiful Taisho-era architecture

► Dining Focus

*Traditional Japanese multi-course dinner (Kaiseki) at your ryokan in Ginzan Onsen.

► Places to Visit Map



Travel Time: The drive between major points takes approximately 2 hours 14 minutes (120 km)..

Day 4/ Return to Sendai & Departure

Enjoy a leisurely breakfast at your ryokan on your final day. Afterward, you will begin your transfer back to Sendai (approx. 2 hours). Once back at Sendai Station, you'll have time for some last-minute souvenir shopping. Be sure to pick up local specialties like *zunda mochi* (sweet edamame paste rice cakes) or regional sake. Following your shopping, proceed to the airport or station for your departure



"Zunda Mochi" - Sweet green soybean paste mochi

► Spot Details & Charm

***Morning Stroll in Ginzan Onsen:** Enjoy the nostalgic town in the quiet morning light.

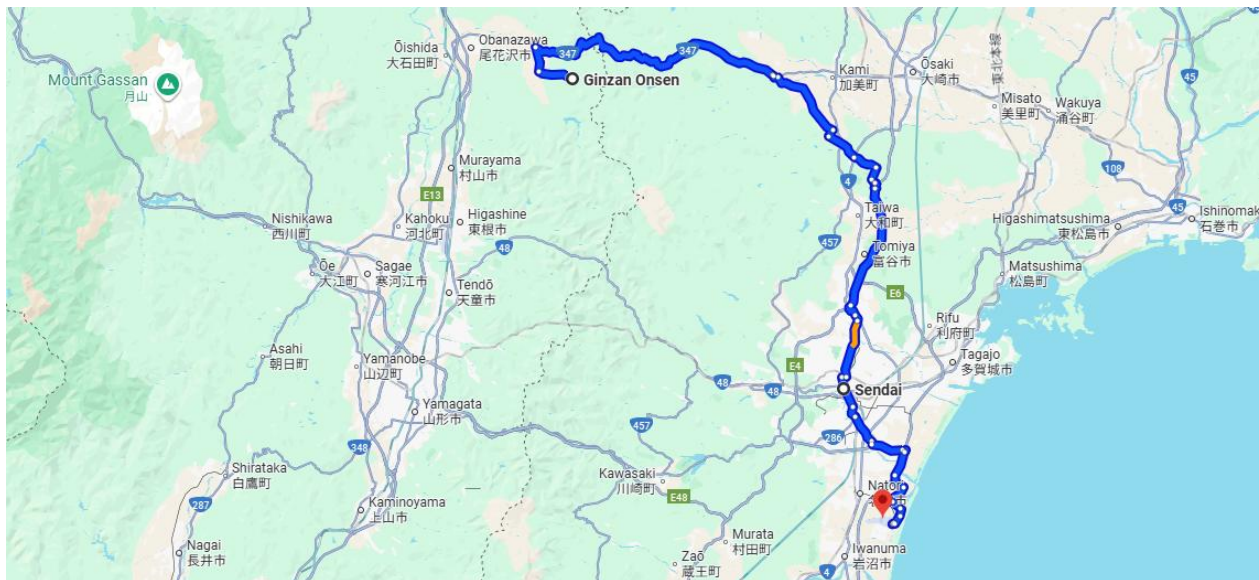
***Sendai Station:** A hub for last-minute shopping for local souvenirs like zunda mochi.

Overnight: N/A (Departure).

► Dining Focus

***Last Taste of Miyagi:** Indulge in one last taste of the region by trying **Zunda Mochi**—a delightful sweet paste made from crushed green soybeans—or selecting a bottle of high-quality **Miyagi Sake** to take home as a memorable souvenir.

► Places to Visit Map



Travel Time: The drive between major points takes approximately 2 hours 14 minutes (120 km).

Wendy Asia Co.,Ltd.

ADD: 128/63 Phayathai Plaza Building, 6th Floor, Room J, Phayathai Road, Thung Phayathai, Ratchathewi, Bangkok 10400

Tel : (66-2) 216-2201

E-mail : inbound.asia@wendyasia.com

Website : <https://wendy-asia.com/>